

BECHTLER
MUSEUM OF
MODERN ART

ARCHITECTURE AND MEMORY

BOTTA

SilvanaEditoriale



GARNET CHAPEL PENKENJOCH ZILLERTAL - AUSTRIA

2011-2013

Archive: n° 708

Project: 2011-2012

Construction: 2013

Client: Josef Brindlinger, Christa und Georg Kroell-Brindlinger

Partner: Architect Bernhard Stoehr, Besto

Engineers: Konrad Merz, Merz Kley partner

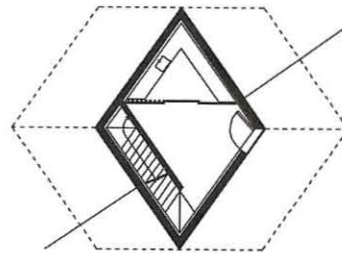
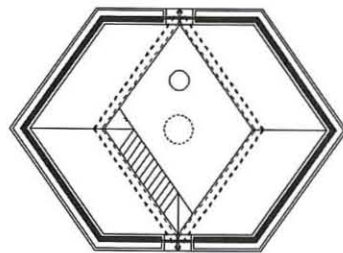
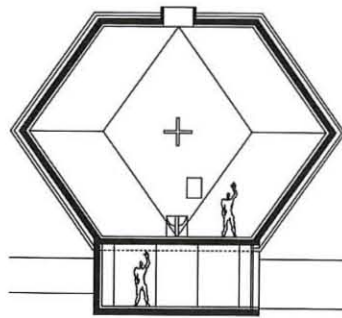
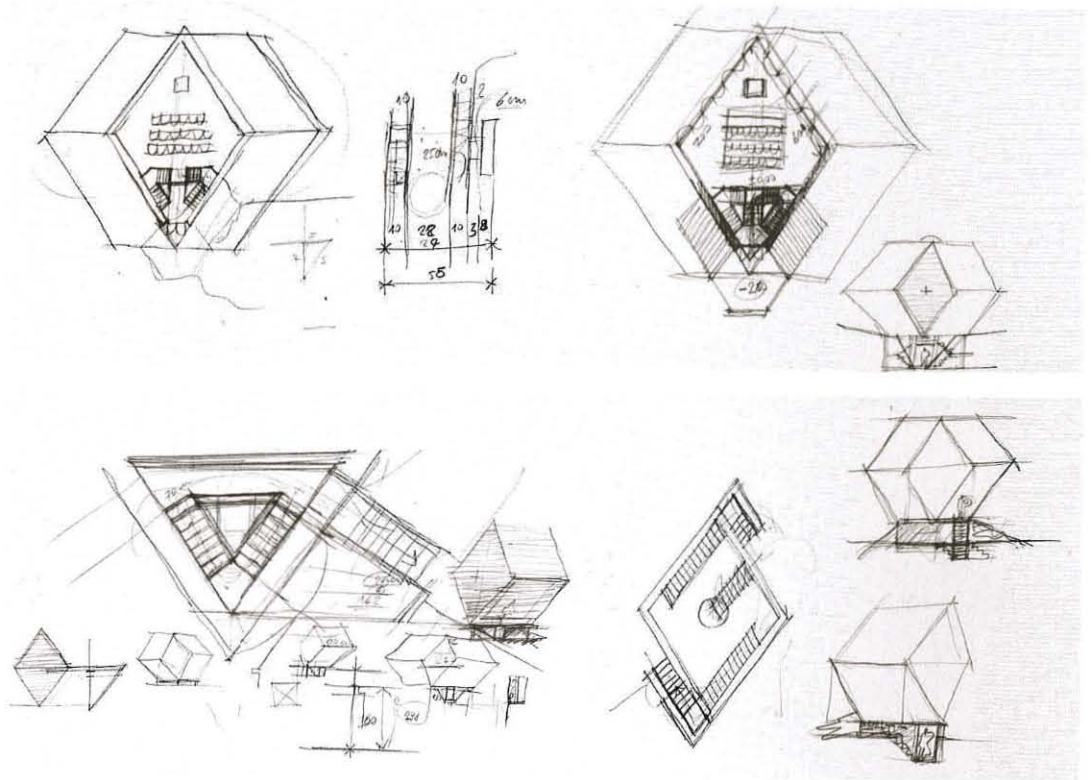
Site area: delimited area 600 m² / 6'458 s ft

Floor area: 40 m² / 430 s ft

Volume: 750 m³ / 26'486 c ft

Artist: Markus Thurner for the wooden icon of Blessed Engelbert Kolland

The chapel gets its name from the particular mineral (garnet) that, in nature reminds a rhombic dodecahedron. The construction is set on top of a mountain at 2087m masl, next to a pond and overlooking to the north the lower Zillertal. The new building comes in the shape of a rhombic dodecahedron, set on a concrete base, with a wooden structure and covered in sheets of corten steel. From the base at ground level a staircase leads to the interior space where the visitor perceives at a single glance the evenness of the geometrical space. One single opening on the top offers a light source that brings to life the even surfaces of the walls, clad in larch wood lath. The magic of this space is the uninterrupted thanks to the light that comes streaming on the walls whose identical regular shapes produce different effects depending on the hours of the day.



+1

0

0 1

