

The background of the cover is a photograph of a modern industrial interior. The ceiling is a curved, ribbed structure made of metal, with a central light fixture. The wall on the right is covered in a dense array of small, square acoustic panels. The overall color palette is a muted, industrial blue-grey.

Factory Chris van Uffelen Design

BRAUN



↑ | Shed roof of production hall
→ | Production hall with façade band

Gerätewerk Matriei

Matriei am Brenner/Navis

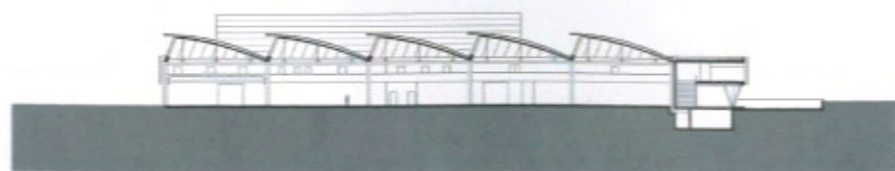
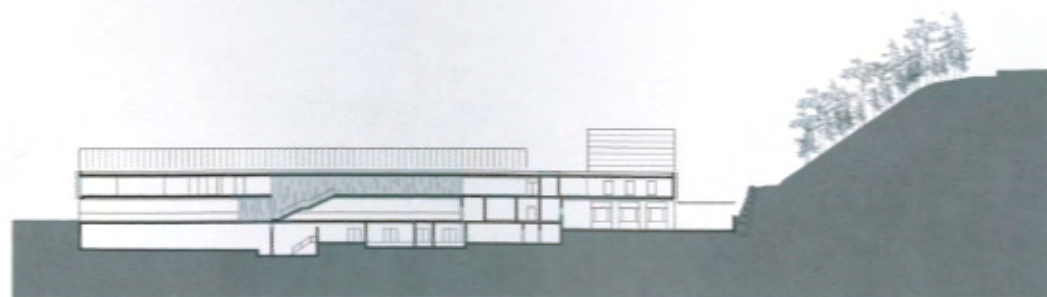
Integrated design services were used for this building for a metal processing plant in the Alps manufacturing heating and cooking equipment, sheet metalwork, etc. The concept is determined by the difficult topographic site characterized by an extreme hillside situation. The façade was inspired by both the corporate culture of the client (a cooperative) and the idea of metalworking. A suspended metal structure unites building volumes which are functionally very different (production, storage, R&D, administration) and reflects once again the cooperative ideal. Metal in its many potential treatments becomes the image bearer of the building.

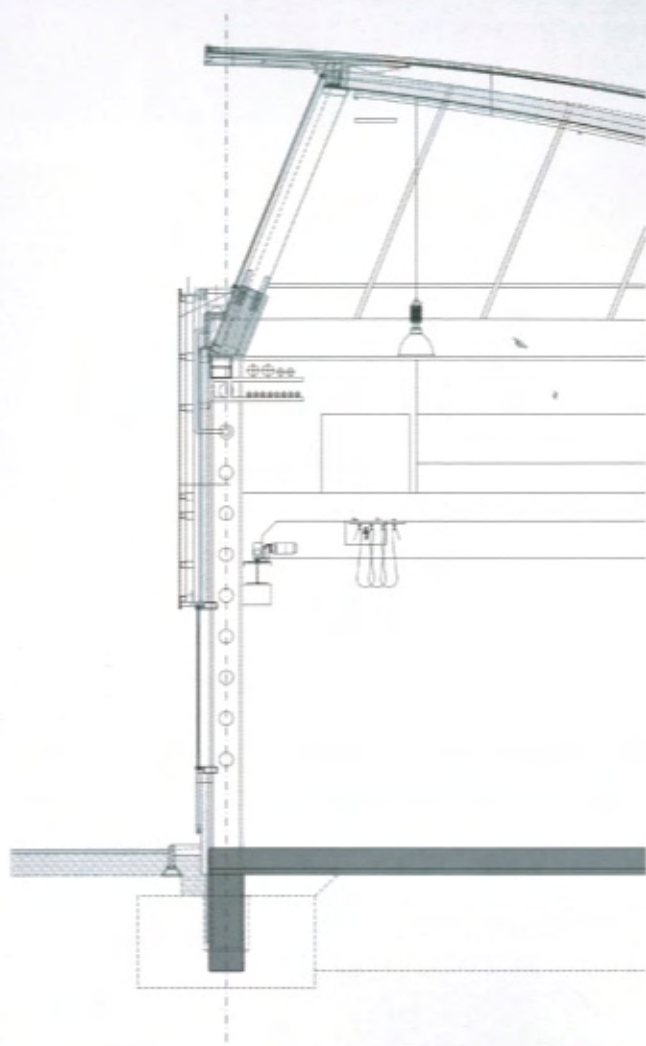
Address: Naviser Straße 1, 6143 Matrei a. Br./Navis, Austria. **Client:** Gerätewerk Matrei reg. Gen.m.b.H. **Completion:** 2005. **Gross floor area:** 11,300 m². **Number of workplaces:** 210. **Main construction:** steel columns. **Roof:** timber shed roof. **Lighting:** roof, continuous glazing in base, light deflecting slats. **Main materials:** alucobond façade strip, steel and aluminum elements, timber, concrete, glass, laminated panels. **Setting:** rural.





↑ | Administration building and
production hall
↙ | Sections





← | Detail, north façade
↓ | Production hall with light timber roof construction

